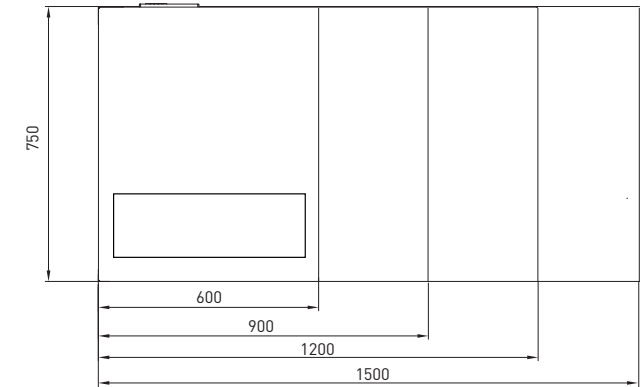
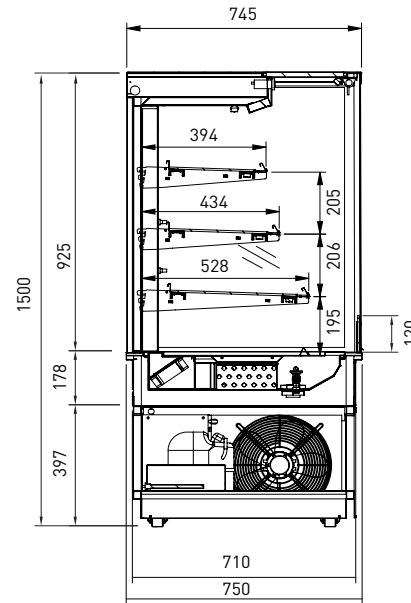




OR TTG OR6 TTG OR9 TTG OR12

- Open front
- Two adjustable shelves
- Stainless steel hinged rear doors
- Deck forced refrigeration
- Double glazed glass ends
- Two adjustable glass shelves
- Ticket strips on shelves and base
- Under shelf and canopy LED lights
- Integral condenser
- Pull down night blind
- Pigeonhole perspex screens



Rear intake and extract ventilation system

CABINET DIMENSIONS & SPECIFICATIONS

TEMPERATURE RANGE 4-8 DEG C

MODEL	CABINET			WEIGHT KG	SHELVES SIZE 3 X BASE				TOTAL FOOD 100 MM UNITS	DISPLAY M ²	INTERNAL VOLUME M ³	FREQUENCY HZ	REFRIGERANT	OPERATING CURRENT		CONNECTION ELECTRICAL POWER CORD 2200MM		VOLTAGE	PACKED FOR SHIPPING			
	LENGTH (MM)	DEPTH (MM)	HEIGHT (MM)		TOP	2ND	3RD	BASE(WXD)						KW 230V	AMP	NZ/AUS 10 AMP	UK 13 AMP		LENGTH (MM)	DEPTH (MM)	HEIGHT (MM)	WEIGHT (KG)
TTGOR6	600	750	1500	169	490X295	490X325	490X415	545X515	75	0.78	0.34	50/60 HZ	R290	1.96	6.0	3 PIN PLUG	3 PIN PLUG	220-240V	700	830	1670	197
TTGOR9	900	750	1500	217	790X295	790X325	790X415	845X515	120	1.25	0.52	50/60 HZ	R290	1.96	6.0	3 PIN PLUG	3 PIN PLUG	220-240V	1000	830	1670	251
TTGOR12	1200	750	1500	256	1090X295	1090X325	1090X415	1145X515	155	1.71	0.69	50/60 HZ	R290	1.39	7.6	3 PIN PLUG	3 PIN PLUG	220-240V	1300	830	1670	208

Maximum shelf load weight 15kg spread evenly

Rear Ventilation

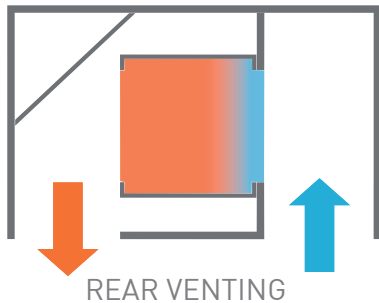
Rear intake and extract ventilation system
Side mounted compressor

Front can be fully covered with custom panel joinery to suit environment

Ambient air intake through right rear internally ducted through condenser face

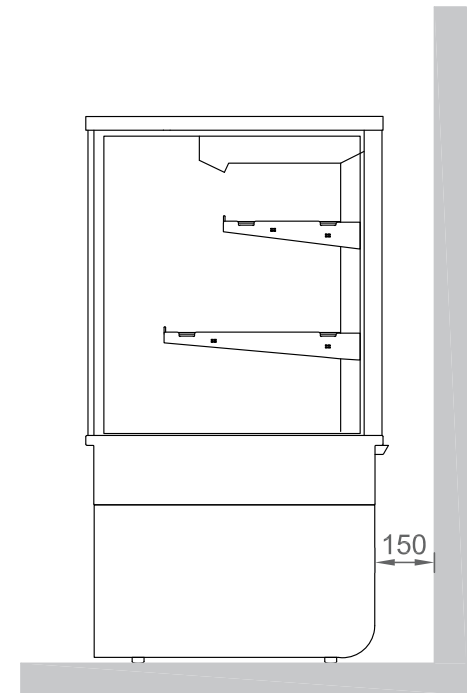
Exhaust air extract internally ducted trough left rear to environment

CUSTOMER SIDE

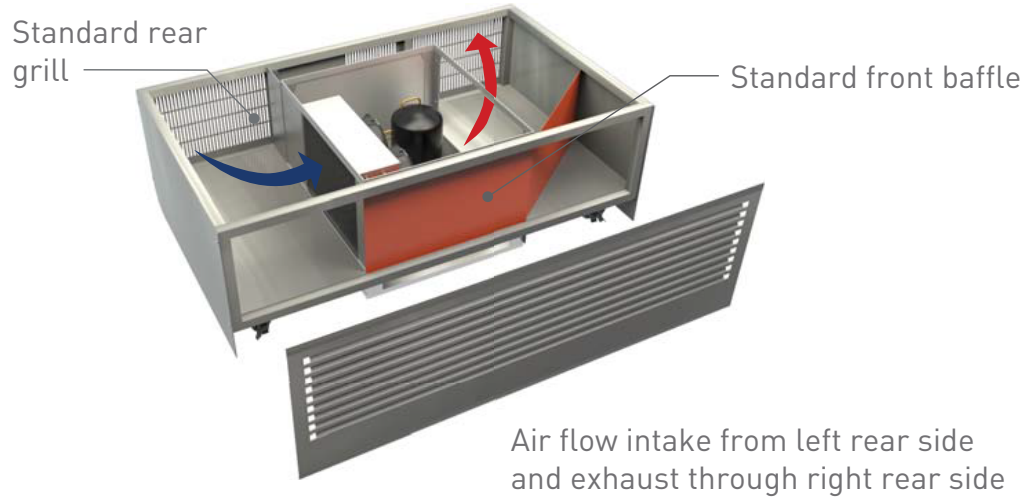


Separation To Wall

A separation gap of 150mm must be allow to provide adequate ventilation if unit is being placed hard up against a wall



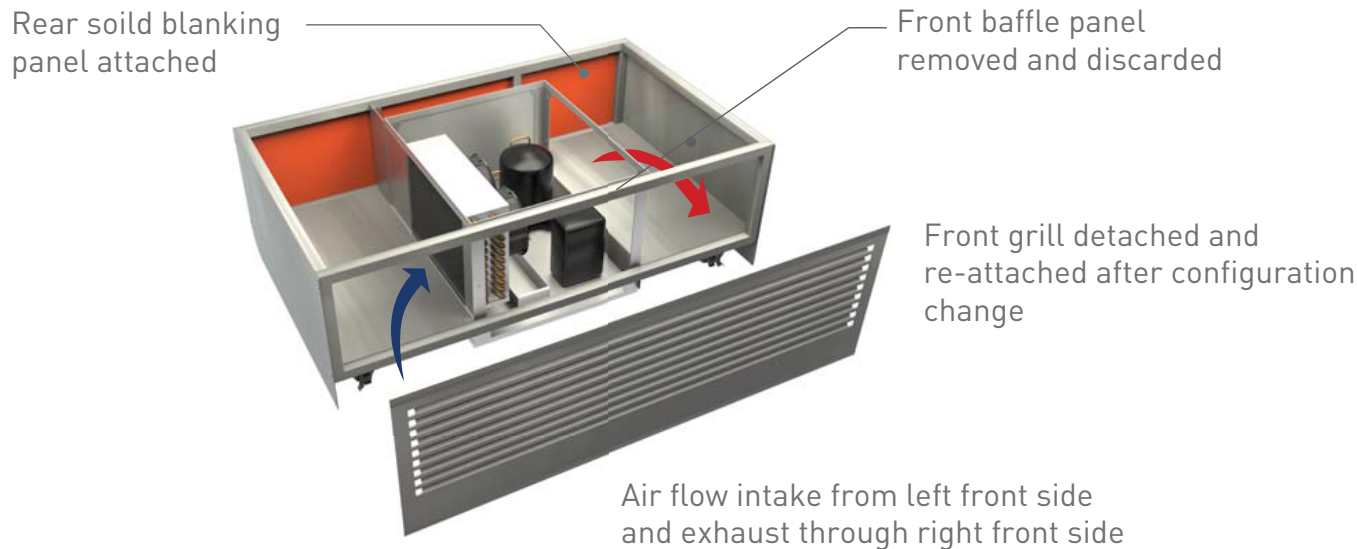
Standard Configuration as shipped



Back to back with front venting

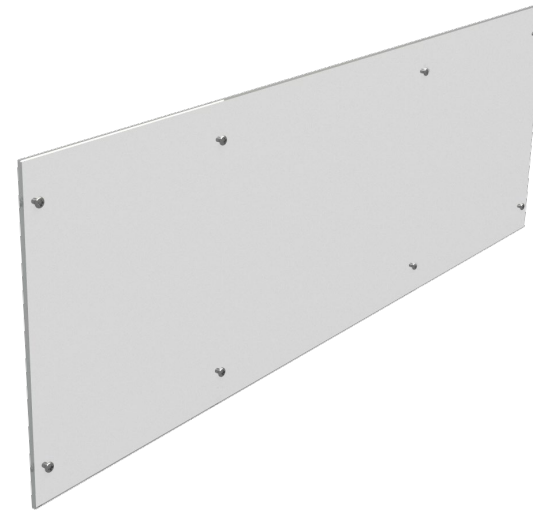


Optional Configuration - Front to Front



Against a wall with front venting



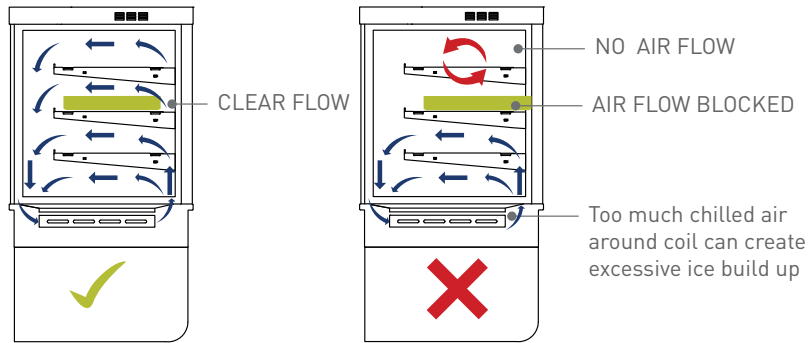


Rear blanking panel

Panel fitted over rear vent panels to block airflow to allow for front venting.

MODEL	PANEL SIZE	
	LENGTH (MM)	HEIGHT (MM)
TTGOF9	900	305
TTGOF12	1200	305
TTGOF15	1500	305

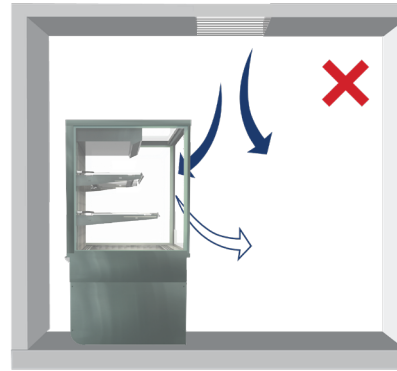
Front venting -Rear blanking panel



CORRECT AIRFLOW

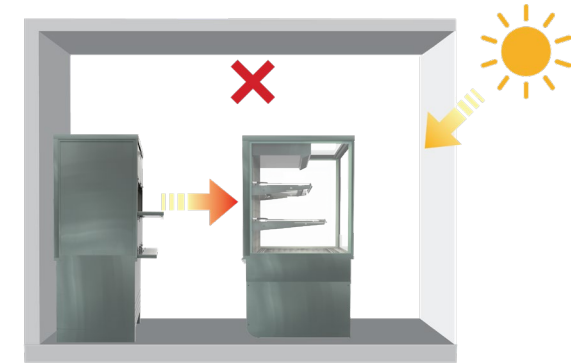
IN CORRECT AIRFLOW

- Blocked air flow will retard operation on both HOT and COLD units
- Ensure trays or plates are not blocking air flow at rear



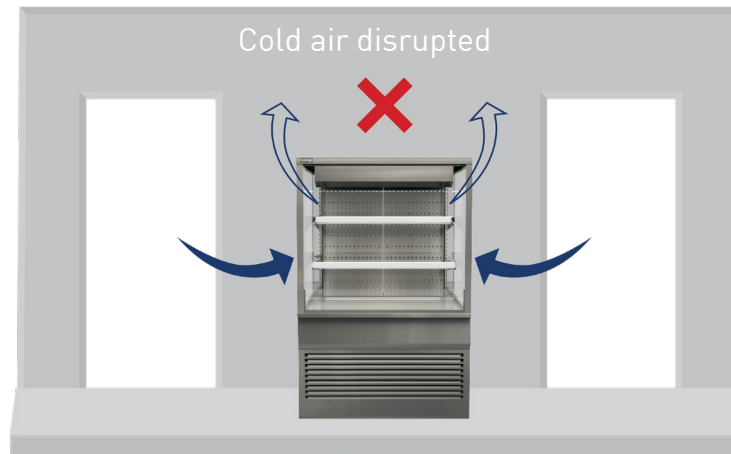
Mechanical airflow

Mechanical air flows, such as diffusers and fans can disturb the air curtain on open fronted units causing failure



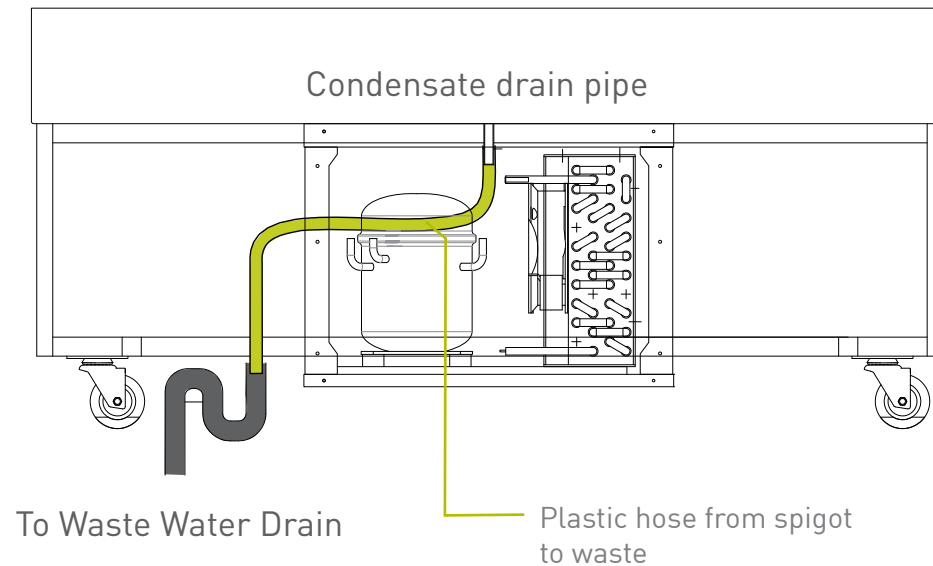
Environmental conditions

Heat from other equipment and natural conditions, such as direct sunlight straight on units, can cause cooling to fail and overload compressor



Locations to avoid

- Close to shop front exterior
- In an outside location
- In direct sunlight
- In a high wind
- Near any source producing excessive heat
- Service units more frequently in dusty or polluted areas



As standard units are self evaporating to a receptacle in the condenser unit. In areas of high humidity it is recommended by-passing the evaporator dish. A plastic hose can be attached to the end of the condensate drain and re-directed as shown.

PLUMBED DRAINAGE TO WASTE

- Plumbed to a waste following all local plumbing and building codes
- Building waste by client
- Preferred method in high humidity conditions

DRAINAGE RECOMMENDATIONS for high humidity locations

TO BE CONSIDERED FOR
HIGH HUMIDITY SITES
WITH ACCESS TO DRAINAGE



Parts removed

Castors, front and side panels removed. Rear panels / grill remain for personnel safety.

Dropped Into Benchtop

Unit is dropped in to hole cut in bench top and supported by front and rear flange of unit.

MODEL	CUT OUT SIZE
TTG6	615 X 720
TTG9	915 X 720
TTG12	1215 X 720



Placed Into Benchtop from rear

Unit is slid into custom built frame from rear and supported by the sides of the unit base frame. L shaped supports shown in red in this example.

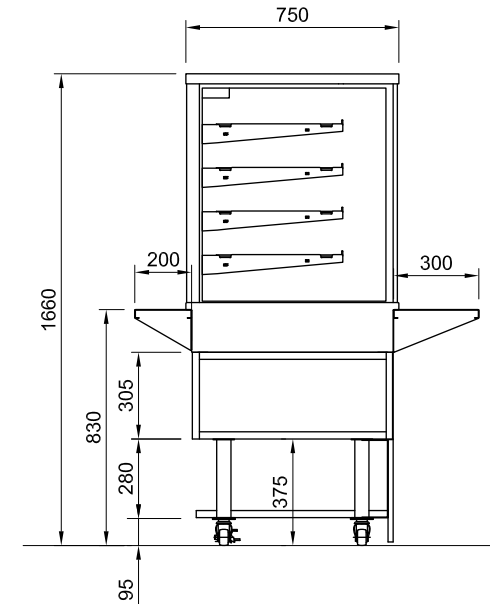




SELF SERVICE SYSTEM

USED WITH SLIDING FRONT DOOR OPTION

- Each unit is self contained
- Roll-in - Roll-out
- Install in minutes
- No on site joinery work required
- Ease of cleaning and servicing
- Mobile and flexible
- Easy to upgrade front panel design
- Custom branding strip
- Rear service or against wall
- All parts as optional component kits
- Ideal solution for temporary events



Optional bottom shelf kit for chilled units
Ensure chilled units are kept well ventilated

Vent required through front panel

Optional bottom meltica shelf kit - BY OTHERS

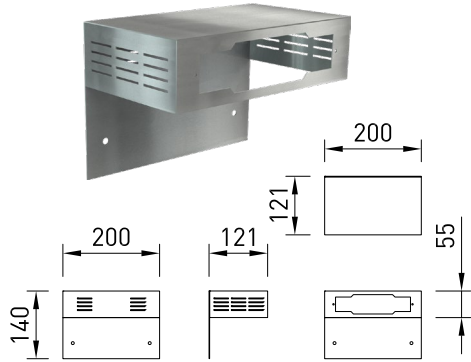


Optional rear loading shelf kit
200mm deep

Optional bottom meltica shelf kit - BY OTHERS

Top Mounted Controller Panel

For against wall installations
Sold individually



Base Tray - Heated Units

Stainless Steel
For heated units
Sold in pairs



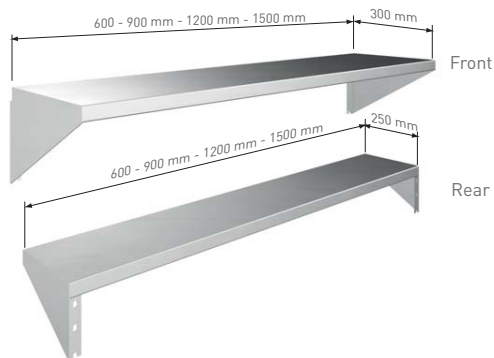
Tong Holder

Stainless Steel
Drop into counter tray race
Sold individually



Front and Rear Work Shelves

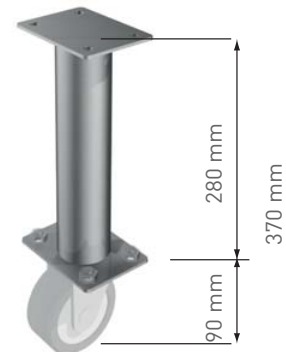
Stainless Steel
Sold individually



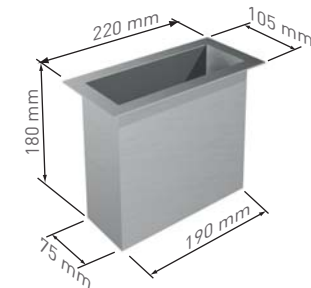
Castor Extension Kit

Increases cabinet height to 1660mm

Set of four, uses existing castors, includes fixing bolts and washers

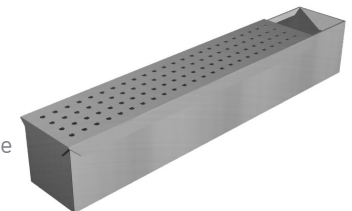


Bag Holder



Humidity Dish

Stainless Steel
Perforated lid is removable

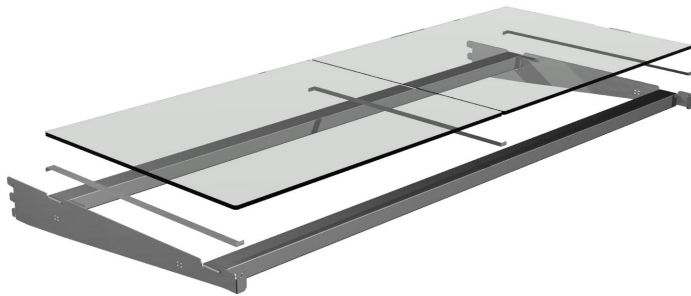


Glass Shelf Options

Standard wire racks are removed and replaced with 6mm toughened glass panes



Stainless Steel glass shelf support bracket

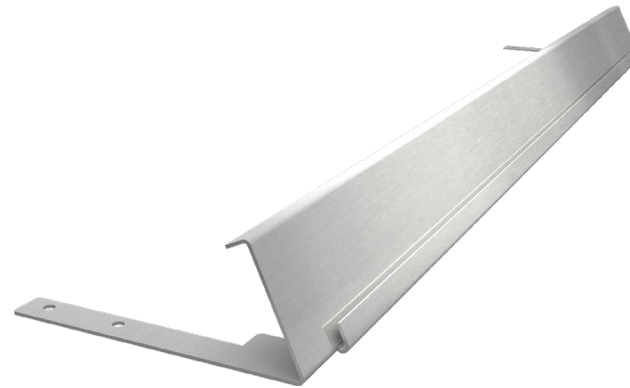


Maximum shelf load weight 15kg spread evenly

MODEL	GLASS	WIDTH MM	DEPTH MM	PER SHELF PANES	SHELVES	TOTAL PANES
BTGRF6	6MM TOUGHENED - POLISHED EDGES	240	430	2	3	6
BTGRF9	6MM TOUGHENED - POLISHED EDGES	390	430	2	3	6
BTGRF12	6MM TOUGHENED - POLISHED EDGES	540	430	2	3	6
BTGHT6	6MM TOUGHENED - POLISHED EDGES	240	430	2	4	8
BTGHT9	6MM TOUGHENED - POLISHED EDGES	390	430	2	4	8
BTGHT12	6MM TOUGHENED - POLISHED EDGES	540	430	2	4	8

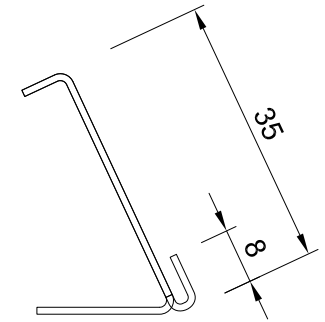


Shelf with ticket strip attached



Ticket Strip

Stainless Steel
Attaches to shelf frame



End Profile

Lengths

CABINET LENGTH MM	TICKET STRIP LENGTH
600	475
900	775
1200	1075

Price Tabs

Stainless Steel
Write on with marker or adhesive tape
Measure 60mm x 30mm
Sold in packs of 20



OR OH Units - Unit Spacer

For OH and OR units. Provides a 100mm space between open fronted heated and chilled units to prevent the transfer of hot and cold air which can reduce performance.

Attached to the bottom side of one unit using existing screws on side panel. screws are removed and spacer is screwed in place.



OR Units Rear door locking plate

For against wall or back to back installations used to prevent rear hinged doors from being opened.

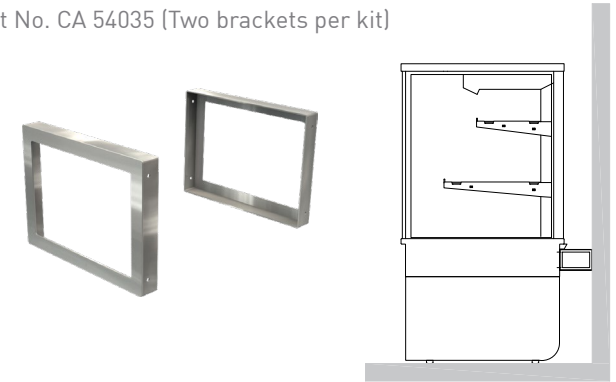
Rear door handles are removed and discarded and plate is screwed in place.

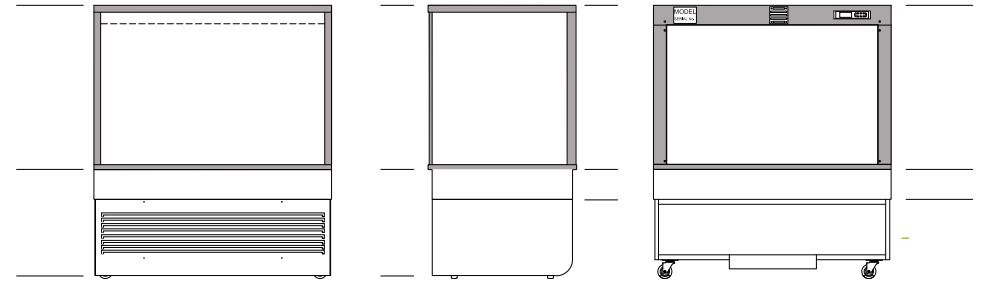
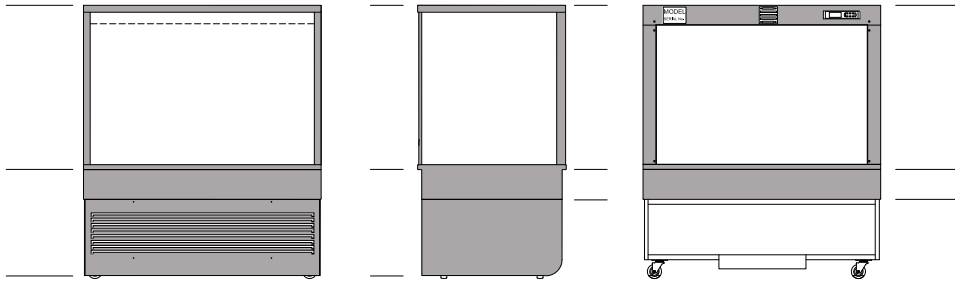


Wall Spacer Brackets

Cossiga wall spacer bracket accessory attaches to rear of unit to provide correct separation to a wall.

Part No. CA 54035 (Two brackets per kit)



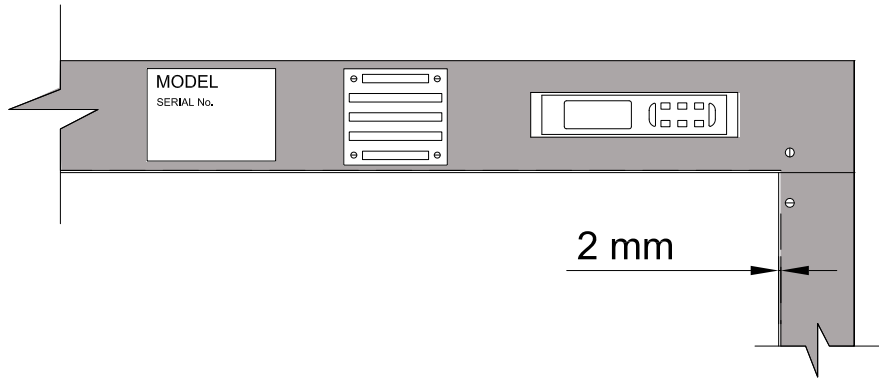


FREE STANDING

all exterior visible areas covered

FREE STANDING BEHIND NIB WALL

all exterior top visible areas covered



2mm gap left around rear frame

Rear of units cut around serial number plate, exhaust fan and controller

WRAP TRIMMING

