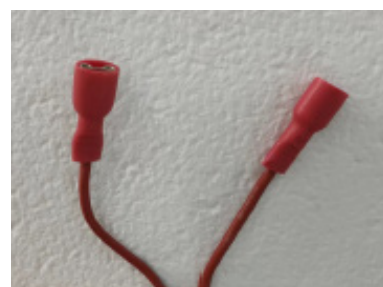
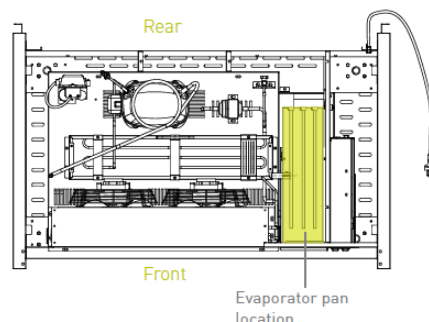
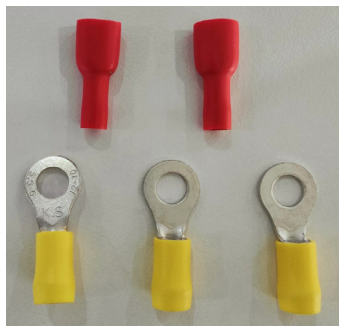


How To

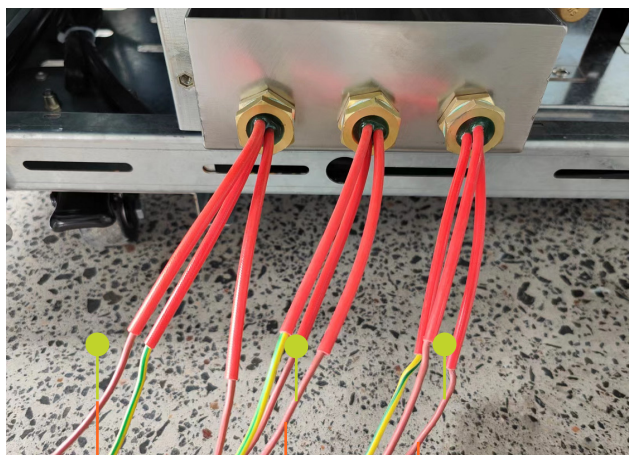
Connect the electronic evaporator pan

cossiga



1. Prepare
 - 2 * female connectors (6.4 * 0.8 mm DG)
 - 3 * ring terminals (6 mm STUD DG)
 - 2 * 5-way cage clamp connectors
 - 2 * 300V, 0.75mm² wirings

2. Connect 2 * female connectors to 2 * 300V, 0.75mm² wirings

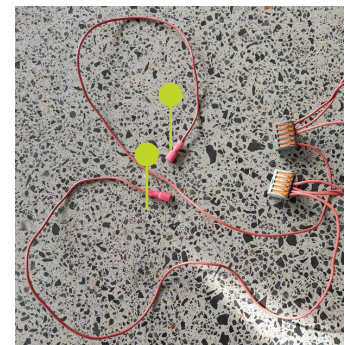
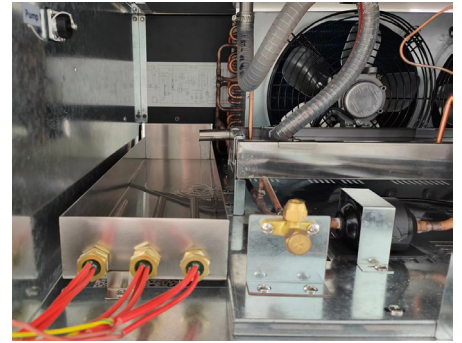


3. Connect One of the Live wirng of each heating elements and one wiring from Step 2 to a 5-way cage clamp connector. Repeat the same to another 5-way cage clamp connector.

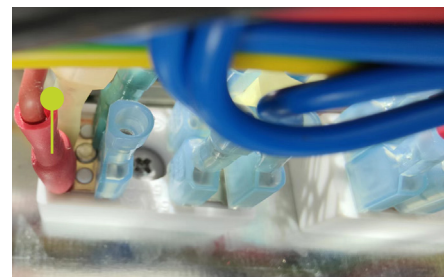
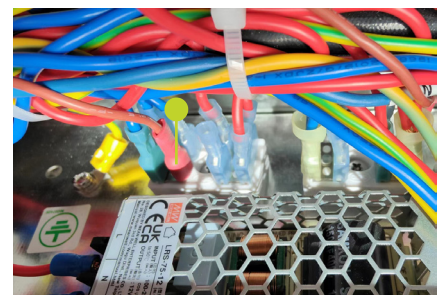
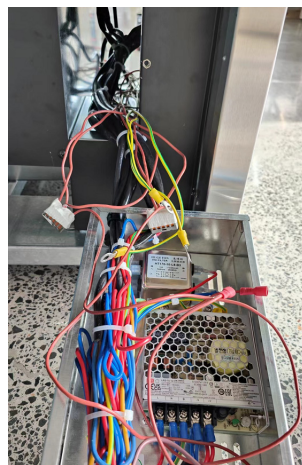
How To

Connect the electronic evaporator pan

cossiga



4. Turn off the power
Remove the grill in the front
Bring the plastic bottle out
Remove the back metal panel
Place the evaporator pan into the cabinet



5. Unscrew the screwers on the front panel
and bring the electronic box out

6. Plug 2 * female connectors
into the terminal blocks

How To

Connect the electronic evaporator pan

cossiga



7. Install the electronic box back to the front panel
Install the back metal panel
Turn on the power
Install the front grill back