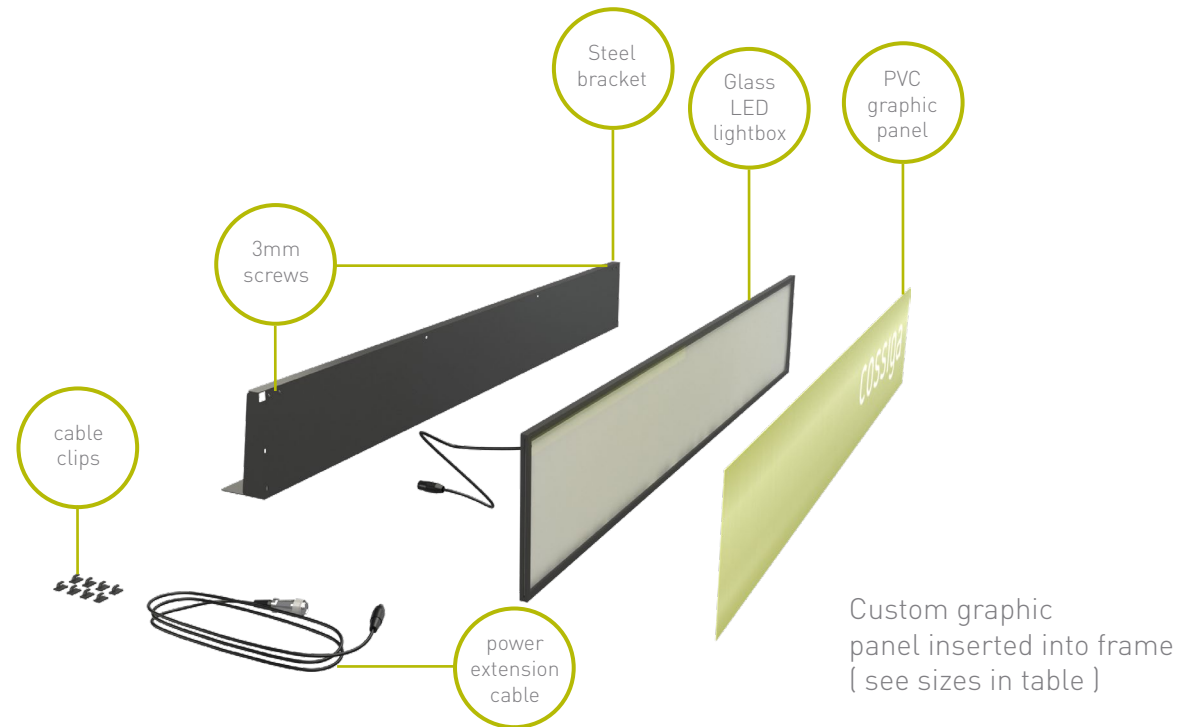


LIGHT BOX ASSEMBLED



EXPLODED PARTS DIAGRAM

LIGHT BOX SIZES

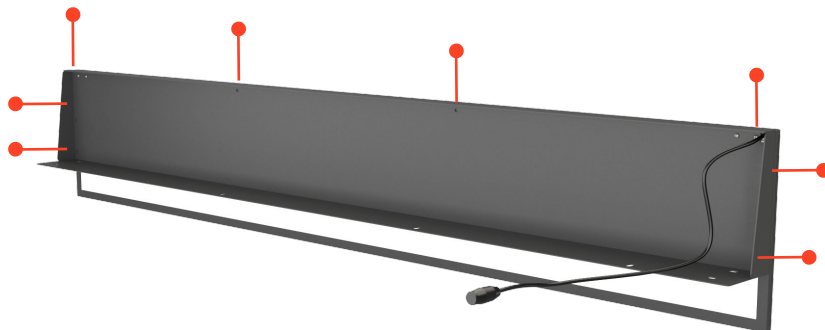
MODEL	LIGHT BOX SIZES		
	OVER ALL LENGTH	HEIGHT MM	GRAPHIC PANEL SIZE W X H
DTG6	600	200	595 X 189
DTG9	900	200	895 X 189
DTG12	1200	200	1195 X 189
DTG15	1500	200	1495 X 189



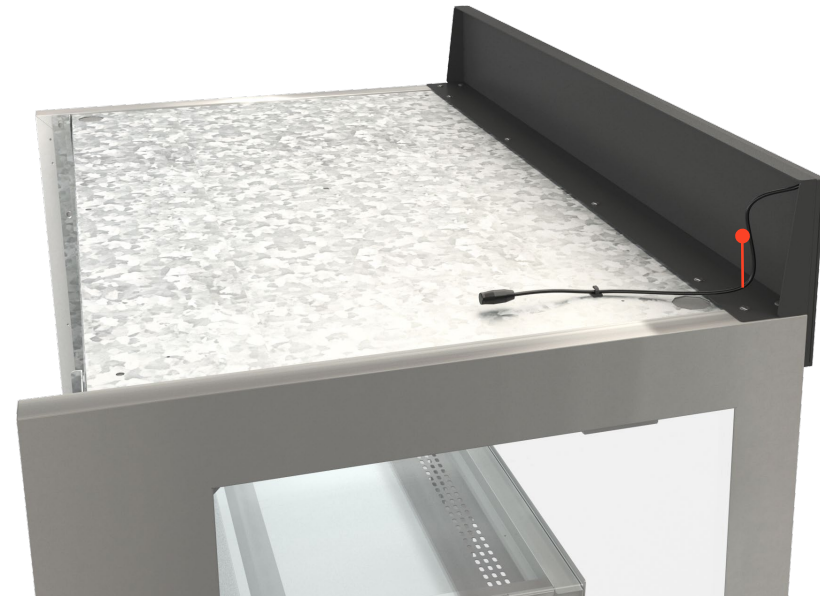
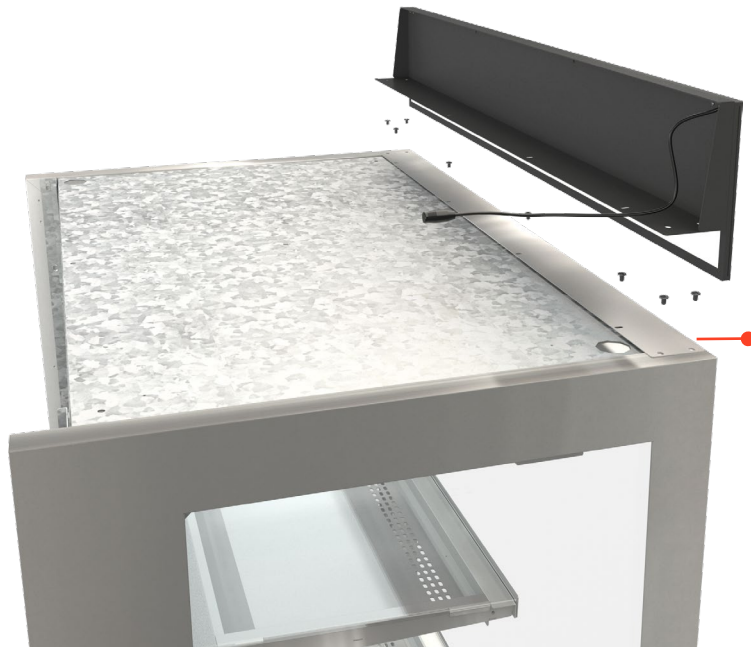
- 1. INSTALL GRAPHIC PANEL INTO LIGHT BOX**
Carefully slide the graphic panel into the side of the glass light box.
GLASS LIGHT BOX IS FRAGILE. TAKE CARE NOT TO BEND GLASS OR FRAME.



- 2. INSTALL LIGHT BOX TO BRACKET**
Slide the power cord through the hole in the bracket on the top right side.

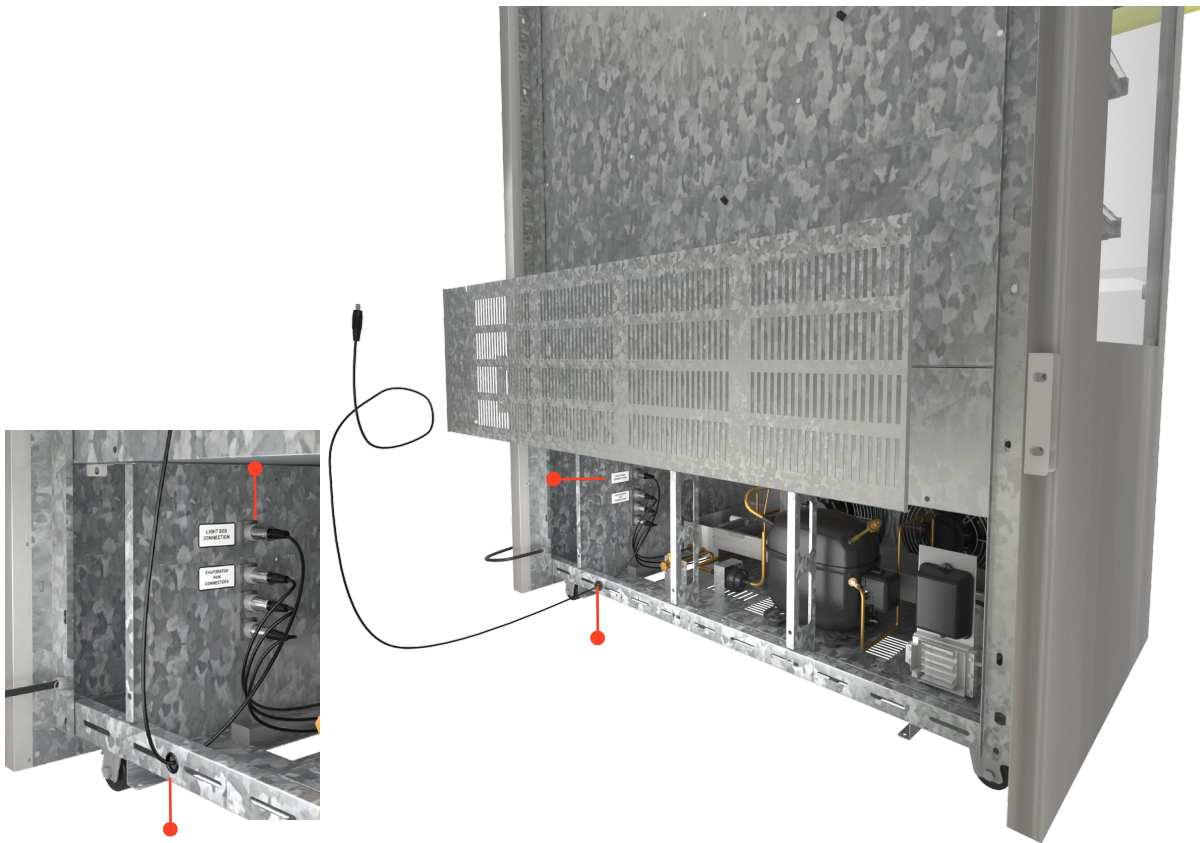


- 3. INSTALL LIGHT BOX TO BRACKET**
Use the M3 screws (number may differ on light box size) to fix the light box to the bracket from the rear through the screw holes.



- 4.** **INSTALL BRACKET TO CABINET**
Turn cabinet power off. Remove the screws on the top front of the DTG cabinet where the holes are positioned in the light box bracket. Tape may be used to temporarily hold the cabinet piece in place.

- 5.** **INSTALL BRACKET TO CABINET**
Replace the screws to secure the bracket and light box.



- 6.** **INSTALL POWER EXTENSION CABLE**
MAKE SURE CABINET POWER IS OFF. Remove the rear vent grille using fixing screws. Connect the extension cable to power plug labelled "light box". Tighten plug screw. Feed the cable through the hole with grommet in the bottom rear frame. Replace grille.



- 7.** **INSTALL POWER EXTENSION CABLE**
Run cable up the back and over the top right. Secure with cable clip blocks. Connect the extension cable to the light box on the top of the cabinet Power on the cabinet.
The light box will illuminate when cabinet power is on.